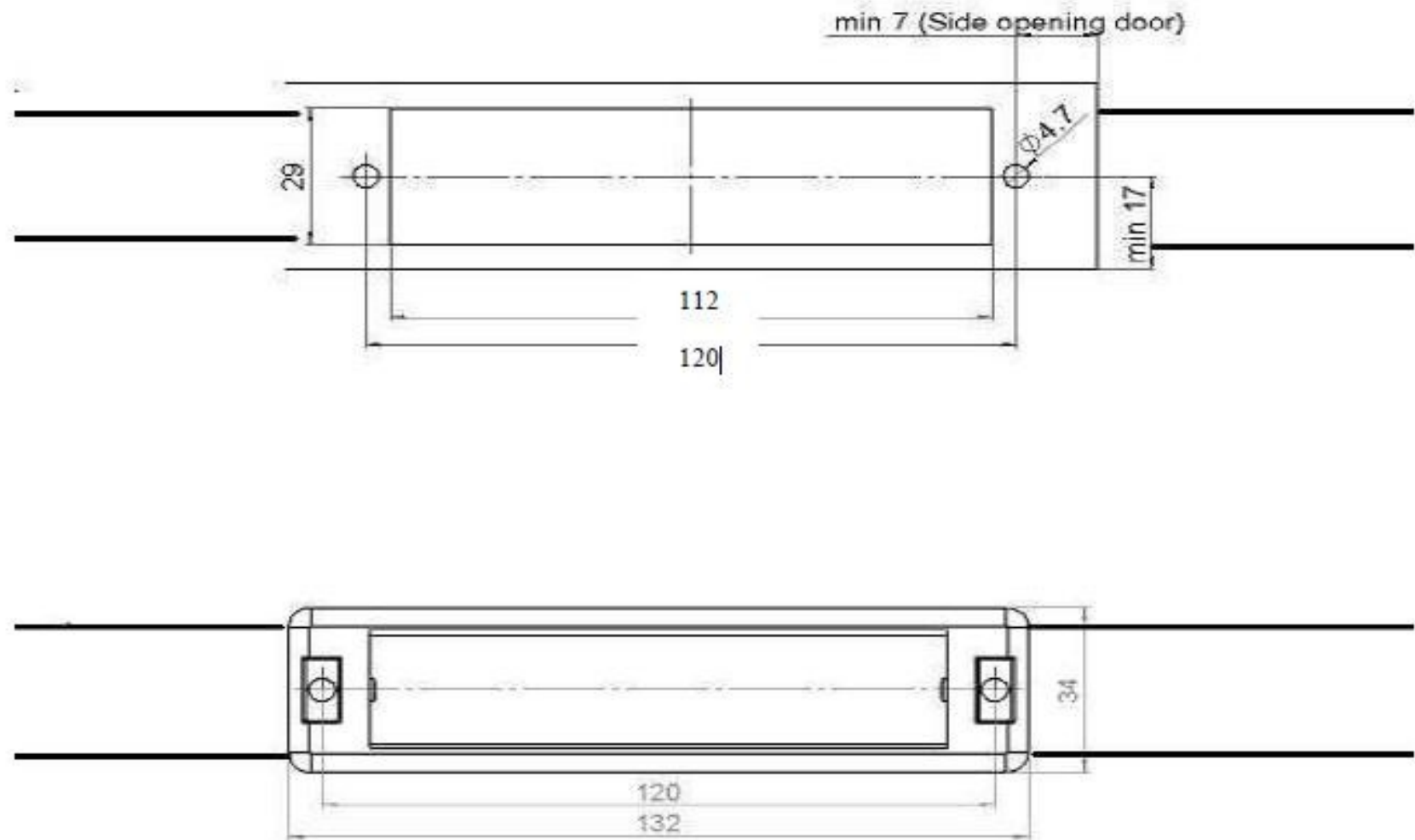


# IMS 100 Installation

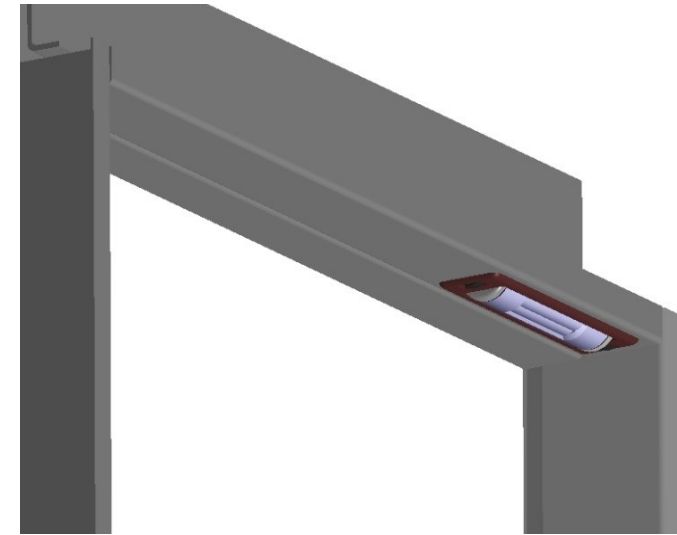
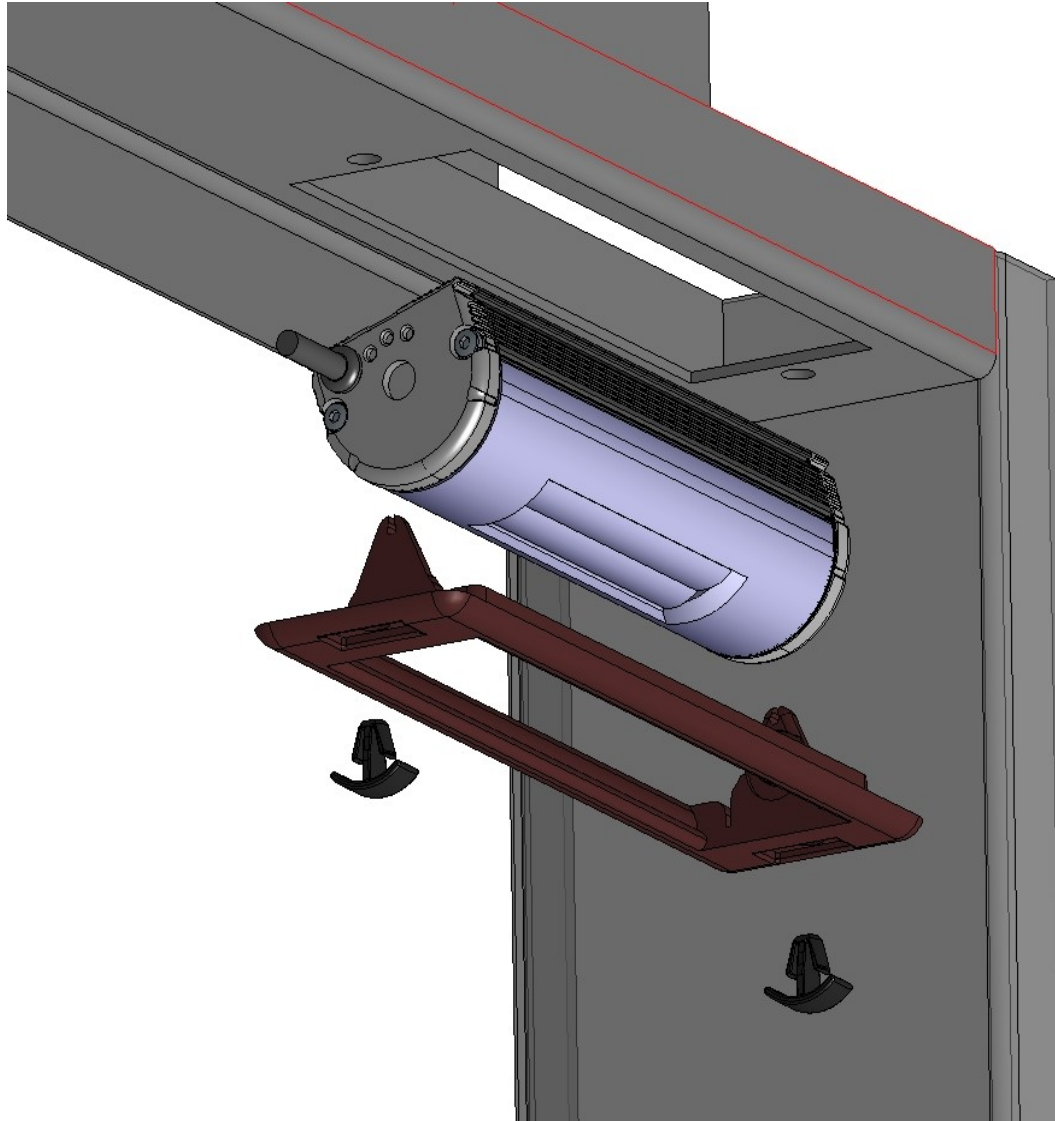
Hole Opening on Car Door Transom



# IMS100 Installation Picture

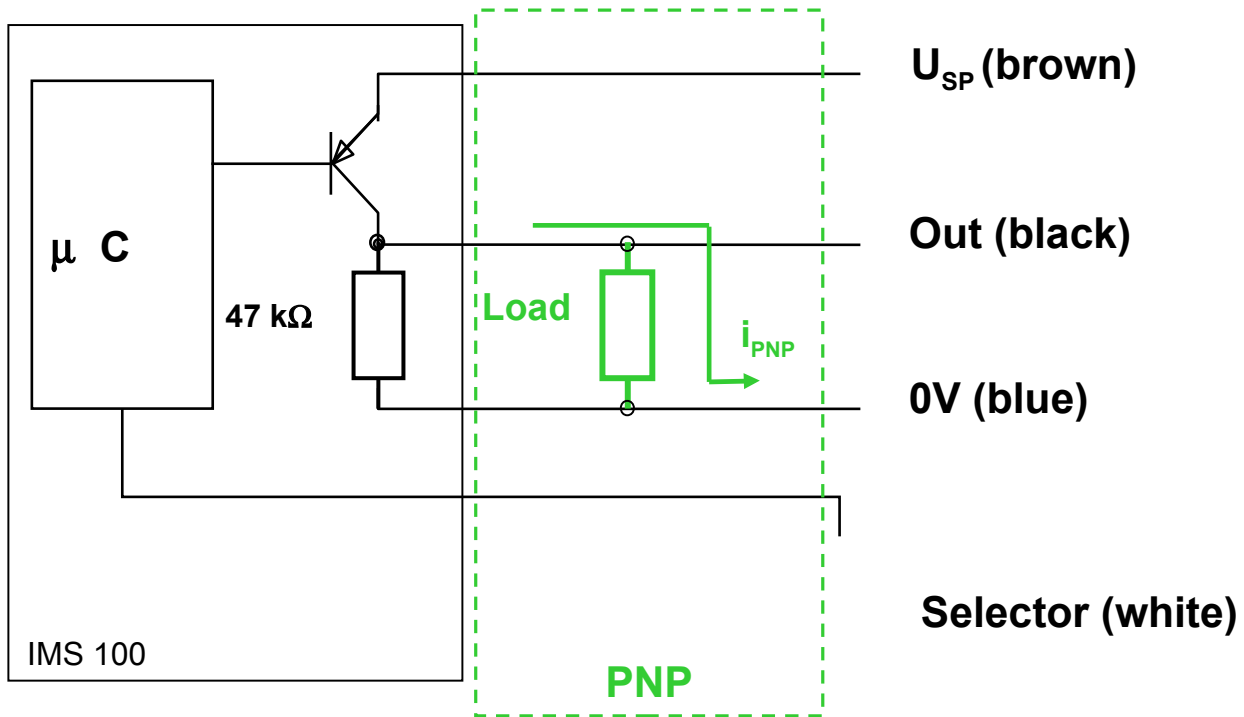


# Mounting details: FLUSH





# Electrical interface



3D	Output	LED
	Low, 0 VDC	LED on
	High, 24 VDC	LED off

# ELECTRICAL WIRING



Brown Wire – +24V

Blue Wire – 0V

Black Wire – In PNP

White Wire – Time Out Selector  
(Connect to 0V for Infinity  
Detection)

DIRECT INPUT : 24VDC

Relay Output – NO or NC to be  
connected parallel or series with the  
Light Curtain Output.